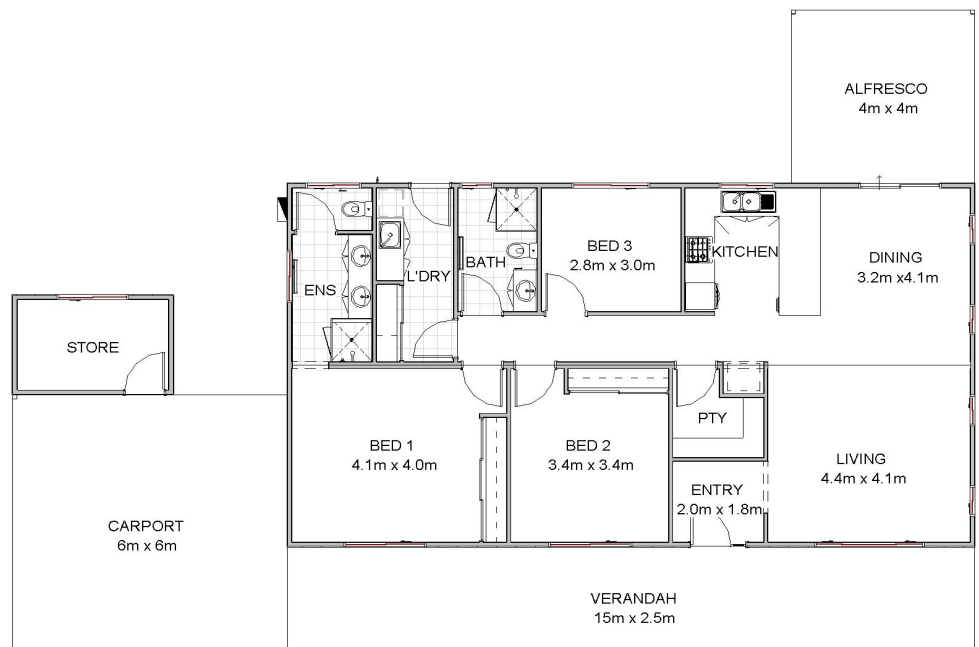




Illustrations purpose only



- ◆ Total Living Area 224m²
 - ◆ Own Your Home
 - ◆ Change the Design to suit your Budget
 - ◆ Internet Fibre to the home
 - ◆ Quality Homes built by Modular WA
 - ◆ Cheaper Power and Water Bills
 - ◆ Pensioner Rent Assistance Available
 - ◆ Organic Orchard for Seasonal Produce
- AND**



No Exit Fees. When you sell your home you keep 100% of sales proceeds

For more information contact us today.

* Price is current as at Jan 2021 and is subject to change without notice. Additional site costs may apply dependent on site selections. Home illustrations are intended to be a visual aid only and may not accurately represent the actual home.



Standard Inclusions:

- ◆ Carport, porch, storeroom and alfresco
- ◆ 6 Star energy efficient home
- ◆ Move in ready
- ◆ Painted throughout
- ◆ Carpeted bed room; tiled wet areas; planked vinyl in all other areas
- ◆ 2,425 mm ceilings with classic cornices
- ◆ Insulated roof space and external walls
- ◆ Electric oven and cook top (rangehood incl.)
- ◆ Energy efficient electric hot water system
- ◆ Quality fittings throughout
- ◆ Fibre to the home
- ◆ Low maintenance native front garden
- ◆ Open wire-and-post rural-style fencing
- ◆ Fully lined store room with window
- ◆ Window treatments
- ◆ Built in robes
- ◆ LED lighting throughout home
- ◆ Verandah to front of house
- ◆ 6 months maintenance
- ◆ Industry best 10- year structural guarantee

Upgrade Options:

Examples of some of the upgrade options residents consider:

- ◆ Personalise the design of the home to suit your needs
- ◆ Higher Ceilings
- ◆ Air conditioners
- ◆ Verandah all around the house

